

1121 Chobert

Steel · Dome head

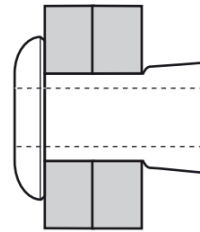
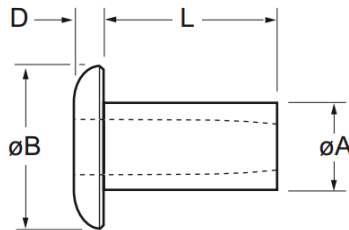
3.2 mm (1/8") - 6.4 mm (1/4")

Features

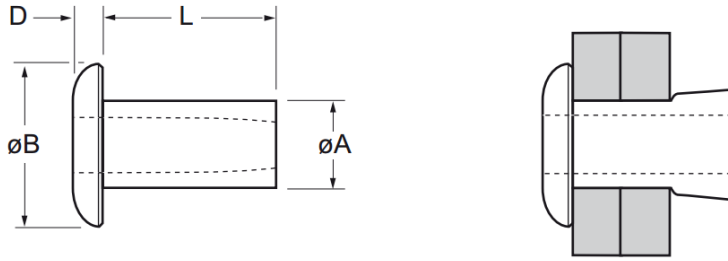
- Consistent controlled clamp, ideal for soft or brittle materials
- Internally tapered bore ensures consistent light clamp to reduce potential damage to materials
- Expands radially during installation to ensure maximum hole fill
- Lower in-place costs than welding or nail rivets
- Ideal pivot pin or hose tail
- Can be bowl fed for larger volume applications using automated equipment

Material

- Low carbon steel, zinc plated, clear trivalent passivated



Part No.	Size ø	Grip Range		Hole Size		øB max.	D max.	L nom.	øA max.	Fasteners per pod ± 1	Shear (typical) kN
		min.	max.	min.	max.						
01121-00404	3.2 (1/8")	0.00	1.57	3.26	3.34	5.47	1.12	3.2	3.25	71	1.42
01121-00405		0.79	2.36								
01121-00406		1.57	3.18								
01121-00408		3.18	4.75								
01121-00410		4.75	6.35								
01121-00412		6.35	7.92								
01121-00506	4.0 (5/32")	1.57	3.18	4.09	4.17	6.48	1.45	4.8	4.04	47	2.44
01121-00508		3.18	4.75								
01121-00510		4.75	6.35								
01121-00512		6.35	7.92								
01121-00514		7.92	9.52								
01121-00516		9.52	11.10								



Part No.	Size ø	Grip Range		Hole Size		øB max.	D max.	L nom.	øA max.	Fasteners per pod ± 1	Shear (typical) kN
		min.	max.	min.	max.						
01121-00605	4.8 (3/16")	0.00	1.57	4.85	4.93	8.87	1.78	4.0	4.85	50	3.20
01121-00607		1.57	3.18					5.6		38	
01121-00609		3.18	4.75					7.2		33	
01121-00611		4.75	6.35					8.8		28	
01121-00613		6.35	7.92					10.0		24	
01121-00615		7.92	9.52					12.0		21	
01121-00617		9.52	11.10					13.5		19	
01121-00619		11.10	12.70					15.1		17	
01121-00809	6.4 (1/4")	3.18	4.75	6.35	6.43	10.44	2.11	7.2	6.35	32	4.40
01121-00811		4.75	6.35					8.8		27	
01121-00813		6.35	7.92					10.0		24	
01121-00815		7.92	9.52					12.0		21	
01121-00817		9.52	11.10					13.5		19	
01121-00819		11.10	12.70					15.1		17	

Assembly Applications

- Automotive
- Electronic components
- Sheet metal
- Electrical engineering
- Domestic appliances
- General light fabrication
- Injection moulded components

